

Numéro HER  
393

## Identification

Nom P1D	Morphotype A1 (Myophage)	Autres désignations	
------------	-----------------------------	---------------------	--

## Taxonomie

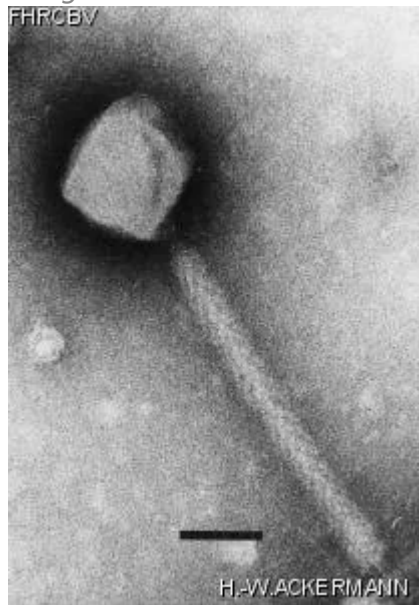
Domaine	Règne	Embranchement	Classe
Ordre	Famille ?1	Genre	Espèce

## Images

Photo en microscopie électronique

Image

FHRCEBV



Description de l'image

Magnification: 297,000X

Bar: 50 nm

Staining: PTB

<p><i>Caractéristique</i></p> <p>Plaques are imperceptible: 0.1 mm, veiled.</p>	<p><i>Séquence génomique</i></p> <p>Désactivé</p>				
<p><b>Conditions de propagation</b></p>					
<p><i>Hôtes bactériens</i></p> <p>1393</p>					
<p><i>Référence</i></p> <p>Ackermann, H.-W. and coll. 1994. P1D, a new member of the P1 bacteriophage group.</p>					
<p><i>Remarque</i></p> <p>Variant of P1; Slightly longer tail, almost no head size variants, different host range and plaque size.</p> <p>Plaques easier to observe at 42°C than at 37°C; also produced spontaneously.</p> <p>Other host strains: HER 1128(*E. coli* O15), Cubizolles, blanchon, LY265.</p>					
<p><b>Historique</b></p>					
<p><i>Historique</i></p> <table border="0"> <thead> <tr> <th data-bbox="107 989 282 1020"><b>Isolated by</b></th> <th data-bbox="1101 989 1175 1020"><b>Date</b></th> </tr> </thead> <tbody> <tr> <td data-bbox="107 1035 613 1115">A. Reynaud and H.-W. Ackermann Laboratory of Ackermann</td> <td data-bbox="1101 1035 1224 1066">12-1991</td> </tr> </tbody> </table>		<b>Isolated by</b>	<b>Date</b>	A. Reynaud and H.-W. Ackermann Laboratory of Ackermann	12-1991
<b>Isolated by</b>	<b>Date</b>				
A. Reynaud and H.-W. Ackermann Laboratory of Ackermann	12-1991				
<p><i>Source</i></p> <p>*E. coli* O103 4472 (also strains GVs and 2198) after UV + mitomycin C induction.</p>					
<p><i>Dernière mise à jour</i></p> <p>2024-01-22</p>					