

Numéro HER
345

Identification

Nom Ba2	Morphotype A1 (Myophage)	Autres désignations φATCC
------------	-----------------------------	------------------------------

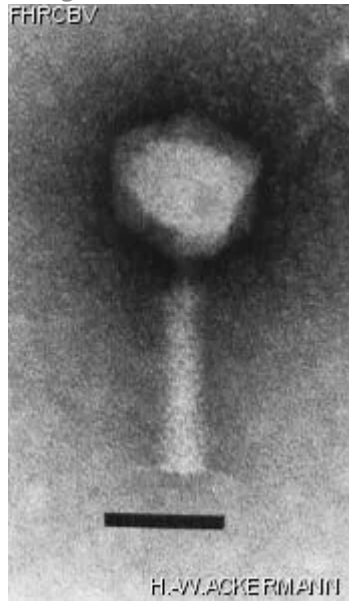
Taxonomie

Domaine	Règne	Embranchement	Classe
Ordre	Famille ?1	Genre	Espèce

Images

Photo en microscopie électronique

Image



Description de l'image

Magnification: 297,000X

Bar: 50 nm

Staining: PT

<p><i>Caractéristique</i></p> <p>Clear plaques 0.1-0.5 mm. May be stored with chloroform. Head: 57 nm, Tail: 90x17 nm. Morphologically identical to *Aeromonas* phage 51. Base plate, short fibers 10 nm in length.</p>	<p><i>Séquence génomique</i></p> <p>Désactivé</p>				
<p>Conditions de propagation</p>					
<p><i>Hôtes bactériens</i></p> <p>1345</p>					
<p><i>Référence</i></p> <p>Ackermann, H.W. and coll. 1985. *Aeromonas* bacteriophages: reexamination and classification. Ann. Inst. Pasteur (Paris). 136E. 175-199. Shelton, C. B., D. R. Crosslin, J. L. Casey, S. Ng, L. M. Temple, and P. E. Orndorff. 2000. Discovery, purification, and characterization of a temperate transducing bacteriophage for *Bordetella avium*. J. Bacteriol. 182:6130-6.</p>					
<p><i>Remarque</i></p>					
<p>Historique</p>					
<p><i>Historique</i></p> <table border="0"> <tr> <td data-bbox="107 1312 332 1346">Received from</td> <td data-bbox="1101 1312 1175 1346">Date</td> </tr> <tr> <td data-bbox="107 1356 466 1528">Dr Louise Temple Department of Biology Drew University Madison, NJ 07940, USA</td> <td data-bbox="1101 1356 1273 1390">20-11-1998</td> </tr> </table>		Received from	Date	Dr Louise Temple Department of Biology Drew University Madison, NJ 07940, USA	20-11-1998
Received from	Date				
Dr Louise Temple Department of Biology Drew University Madison, NJ 07940, USA	20-11-1998				
<p><i>Source</i></p> <p>Isolated from ATCC35086</p>					
<p><i>Dernière mise à jour</i></p> <p>2024-01-19</p>					