

Numéro HER
338

Identification

Nom c6A	Morphotype B2 (Siphophage)	Autres désignations	
------------	-------------------------------	---------------------	--

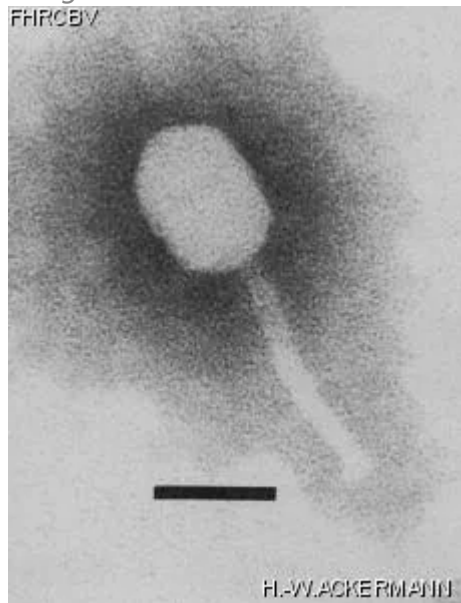
Taxonomie

Domaine	Règne	Embranchement	Classe
Ordre	Famille ?1	Genre	Espèce

Images

Photo en microscopie électronique

Image



Description de l'image

Magnification: 297,000X

Bar: 50 nm

Staining: PT

Caractéristique

Clear plaques of 1.0 mm.
Anaerobic conditions are not required for propagation.
No collar.

Séquence génomique

Désactivé

Conditions de propagation

Hôtes bactériens

1338

Référence

Powell, I.B., B.E. Davidson. 1985. Characterization of streptococcal bacteriophage c6A. J. Gen. Virol. 66: 2737-2741.

Remarque

Historique

Historique

Isolated by

C.S.I.R.O.
Dairy Research Laboratory
Victoria, Australia

Date

Received from

R. Hull
C.S.I.R.O.
Dairy Research Laboratory
P.O. Box 20, Highett
Victoria 3190, Australia

Date

03-1981

Received from

Dr Ian B. Powell
Russell Grimwade School of Biochemistry
University of Melbourne
Parkville, Victoria 3052, Australia

Date

16-08-1988

Source

Cheese factory whey

Dernière mise à jour

2024-01-19