

Numéro HER

325

Identification

Nom

fri (not available)

Morphotype

A1 (Myophage)

Autres désignations

Taxonomie

Domaine

Règne

Embranchement

Classe

Ordre

Famille

?1

Genre

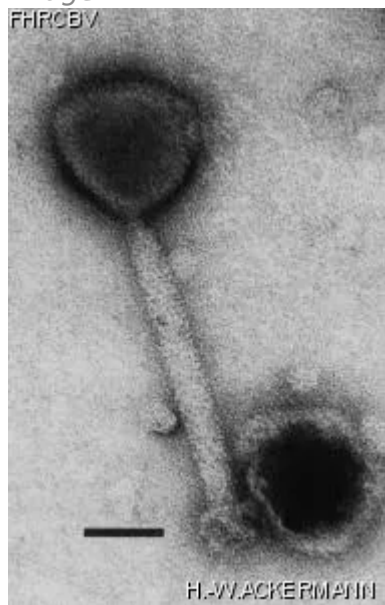
Espèce

Images

Photo en microscopie électronique

Image

FHRCEV



Description de l'image

Magnification: 297,000X

Bar: 50 nm

Staining: UA

Caractéristique

1 mm, clear

Séquence génomique

Désactivé

Conditions de propagation

Hôtes bactériens

1325

Référence

Trevors, K.E., R.A. Holley and A.G. Kempton. 1983. Isolation and characterization of a *Lactobacillus plantarum* bacteriophage isolated from a meat starter culture. Journal of Applied Bacteriology 54:281-288.

Remarque

Morphologically identical with phages species TP50 of *Bacillus*, Twort of *Staphylococcus*, and RSh of *Streptococcus*.

Conspicuous capsomers.

THIS PHAGE IS NOT AVAILABLE FOR THIS MOMENT

Historique

Historique

Received from

Rick A. Holley
Food Research Institute
Agriculture Canada
Ottawa, Ontario, Canada, K1A 0C6

Date

Isolated by

Rick A. Holley
Food Research Institute
Agriculture Canada
Ottawa, Ontario, Canada, K1A 0C6

Date

09-1979

Received from

Karen Trevors
Dept of Biology, Faculty of Science
University of Waterloo
Waterloo, Ontario, Canada, N2L 3G1

Date

25-05-1988

Source

Lyophilized meat starter culture (FERMENTANG BN-1005) B. Heller & Co. Bedford Park, IL 60638, USA

Dernière mise à jour

2024-01-19