

Numéro HER
282

Identification

Nom φH	Morphotype A1 (Myophage)	Autres désignations φH1	
-----------	-----------------------------	----------------------------	--

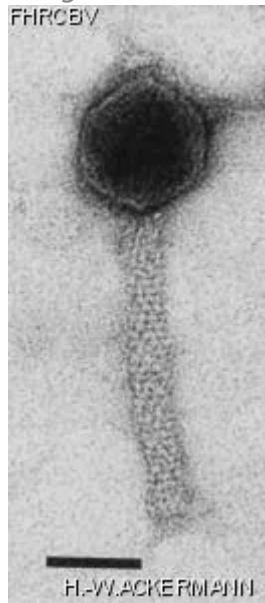
Taxonomie

Domaine <i>Duplodnaviria</i>	Règne <i>Heunggongvirae</i>	Embranchement Uroviricota	Classe <i>Caudoviricetes</i>
Ordre	Famille <i>Vertoviridae</i>	Genre <i>Myohalovirus</i>	Espèce <i>Myohalovirus phiH</i>

Images

Photo en microscopie électronique

Image



Description de l'image

Magnification: 297,000X

Bar: 50 nm

Staining: UA

<p><i>Caractéristique</i></p> <p>Clear plaques of 0.1 to 0.5 mm. Incubate for 3 days.</p>	<p><i>Séquence génomique</i></p> <p>Désactivé</p>
---	---

Conditions de propagation

Hôtes bactériens

1282

Référence

Schnabel, H., W. Zillig, M. Pfäffle, R. Schnabel, H. Michel, and H. Delius. 1982. *Halobacterium halobium* phage ?H. EMBO J. 1:87-92.

Remarque

Propagation is easier if the NaCl content is lowered to 20%.

The first isolate of ?H was a mixture of variants which could be isolated by cloning of single plaques.

Most of the subsequent work was done with the major (90%) of single plaques.

Historique

Historique

Isolated by

H. Michel and W. Zillig
Max-Planck-Institut für Biochemie
Germany

Date

1978

Received from

Dr W. Zillig
Max-Planck-Institut für Biochemie
D-8033 Martinsried bei München
Germany

Date

01-21-1987

Source

Lysate of fermenter culture of *Halobacterium halobium* R1, Würzburg

Dernière mise à jour

2024-01-19