

Numéro HER
278

Identification

Nom Tohama	Morphotype B1 (Siphophage)	Autres désignations	
---------------	-------------------------------	---------------------	--

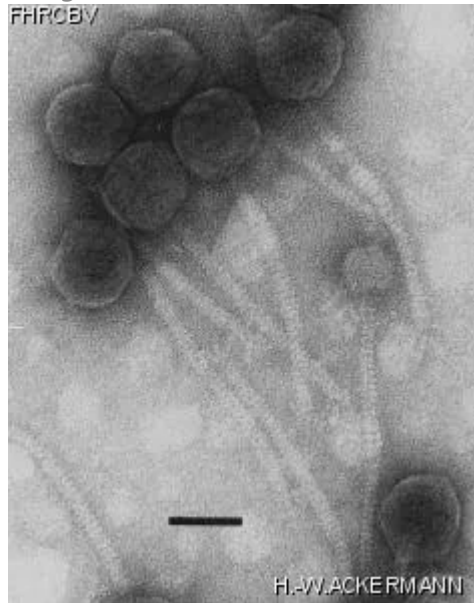
Taxonomie

Domaine <i>Duplodnaviria</i>	Règne <i>Heunggongvirae</i>	Embranchement Uroviricota	Classe <i>Caudoviricetes</i>
Ordre	Famille	Genre	Espèce

Images

Photo en microscopie électronique

Image



Description de l'image

Magnification: 297,000X

Bar: 50 nm

Staining: UA

Caractéristique

Plaques of 1.0-1.5 mm.

Séquence génomique

Désactivé

Conditions de propagation

Hôtes bactériens

1278

Référence

Lapaeva, I.A., S.M. Mebel, N.A. Pereverzev, and L.N. Sinyashina. 1980. *Bordetella pertussis* bacteriophage. Zh. Mikrobiol. Epidemiol. Immunobiol. 85-90.

Mebel, S., I.A. Lapaeva, S. Rustenbach, and I. Uerling. 1981. Spontaneous release of phage from strains of *Bordetella pertussis* used for vaccine production. FEMS Microbiol. Lett. 12: 233-235.

Remarque

Morphologically unstable in cesium chloride gradient at average density 1.45 g/cm³. Also held in the Collection of the WHO Collaborating Center for Research and Reference on *Bordetella pertussis*, Gamaleya Institute, Moscow.

Historique

Historique

Received from

Dr I.A. Lapaeva
Laboratory of Respiratory Infections
Gamaleya Research Institute of Epidemiology
Moscow 123098, Gamaleya st. 18, Russia

Date

12-10-1986

Isolated by

Irina Lapaeva
Gamaleya Institute of Epidemiology and Microbiology
Moscow

Date

1986

Source

Bordetella pertussis Tohama phase I

Dernière mise à jour

2024-01-19