

Numéro HER  
248

## Identification

Nom KSY1	Morphotype C3 (Podophage)	Autres désignations	
-------------	------------------------------	---------------------	--

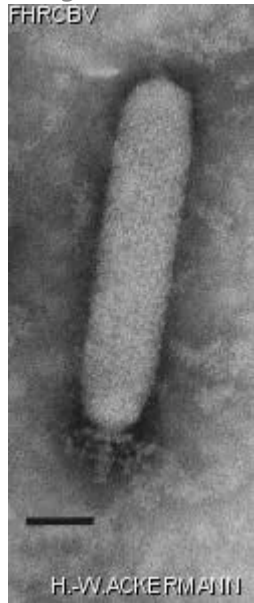
## Taxonomie

Domaine <i>Duplodnaviria</i>	Règne <i>Heunggongvirae</i>	Embranchement <a href="#">Uroviricota</a>	Classe <i>Caudoviricetes</i>
Ordre	Famille	Genre <i>Chopinvirus</i>	Espèce <i>Chopinvirus KSY1</i>

## Images

Photo en microscopie électronique

Image



Description de l'image

Magnification: 297,000X

Bar: 50 nm

Staining: PT

*Caractéristique*

Plaques of 1 mm with halo after two days.

*Séquence génomique*

Activé

## Conditions de propagation

*Hôtes bactériens*

1248

*Référence*

Kalso, S., E.-L. Nurmiäho-Lassila, M.-L. Saxelin, and V. Sundman. 1986. Some characteristics of the lactic streptococcal phage KSY1. *Milchwissenschaft* 41:65-68.

*Remarque*

Held in another permanent collection :  
Department of General Microbiology  
University of Helsinki  
Mannerheimintje 172, SF-00280 Helsinki 28  
Finland

## Historique

*Historique*

**Received from**

Dr Maija-Liisa Saxelin  
Product Development Division  
Research and Development Department  
VALIO Finnish Cooperative Dairies Association  
P.O. Box 390, SF-00101 Helsinki, Finland

**Date**

01-08-1986

**Isolated by**

Dr Maija-Liisa Saxelin  
Department of General Microbiology  
University of Helsinki  
Finland

**Date**

1977

*Source*

Finnish cultured milk product "viili"

*Dernière mise à jour*

2024-01-17