

Numéro HER

240

Identification

Nom
 pilH α

Morphotype
 E1

Autres désignations
 H α

Taxonomie

Domaine

Règne

Embranchement

Classe

Ordre

Famille

Genre

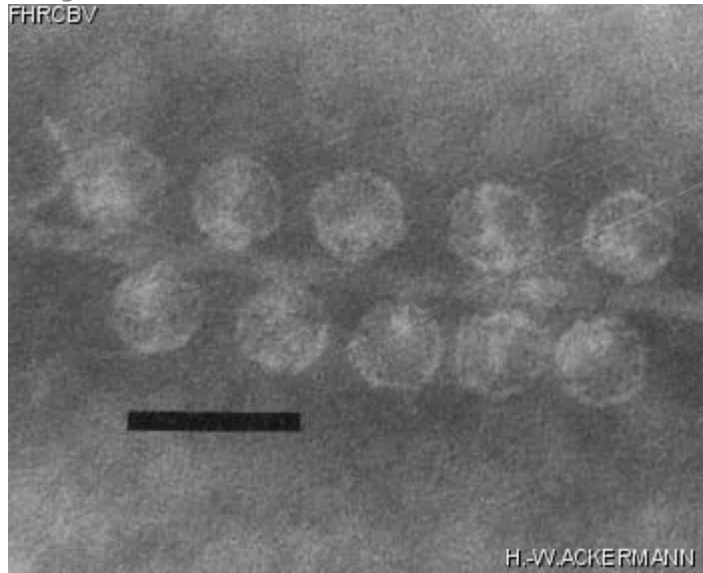
Espèce

Images

Photo en microscopie électronique

Image

FHRCBV



Description de l'image

Magnification: 297,000X

Bar: 50 nm

Staining: PTB

Caractéristique

Veiled plaques, <0.1 to 1mm.
Adsorbs to IncHI and IncHII plasmid-coded pili.
Preparations are rich in broken pili with adsorbed phages.
Propagating strain : *E. coli* K12 containing R27::TnlacZ (resistant to kanamycin and tetracycline)

Séquence génomique

Désactivé

Conditions de propagation

Hôtes bactériens

1240

Référence

Coetzee, J.N., D.E. Bradley, J. Fleming, L. du Toit, V.M. Hughes, and R.W. Hedges. 1985. Phage pilH?: a phage which adsorbs to IncHI and IncHII plasmid-coded pili. J. Gen. Microbiol. 131:1115-1121.

Remarque

Propagates better below 30°C.

Historique

Historique

Received from

(replacement phage)
Dr Diane E. Taylor
University of Alberta
Department of Medical Microbiology and Infectious
diseases
Edmonton, Alberta, T6G 2H7

Date

01-07-1993

Received from

J.N. Coetzee
Institute for Pathology
P.O. Box 2034
Pretoria 0001
South Africa

Date

03-27-1987

Isolated by

J.N. Coetzee
Pretoria, South Africa

Date

early 1980's

Source

Sewage

Dernière mise à jour

2024-01-17