

Numéro HER
205

Identification

Nom
1358

Morphotype
B1 (Siphophage)

Autres désignations

Taxonomie

Domaine
Duplodnaviria

Règne
Heunggongvirae

Embranchement
[Uroviricota](#)

Classe
Caudoviricetes

Ordre

Famille

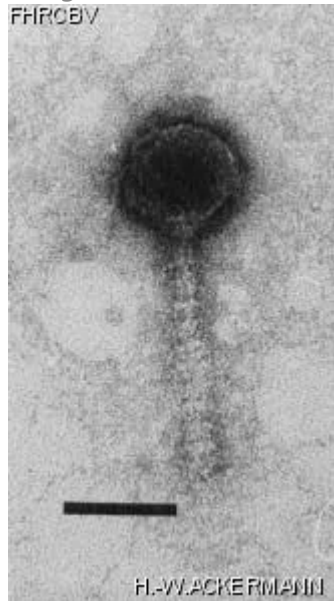
Genre
Whiteheadvirus

Espèce
Whiteheadvirus
wv1358

Images

Photo en microscopie électronique

Image



Description de l'image

Magnification: 297,000X

Bar: 50 nm

Staining: UA

<p><i>Caractéristique</i></p> <p>Plaques: 2-3 mm, clear. Transverse discs on tail. Used for DNA-DNA homology testing.</p>	<p><i>Séquence génomique</i></p> <p>Activé</p>						
<p>Conditions de propagation</p>							
<p><i>Hôtes bactériens</i></p> <p>1205</p>							
<p><i>Référence</i></p> <p>Jarvis, A.W. 1984. Differentiation of lactic streptococcal phages into phage species by DNA-DNA homology. Appl. Environ. Microbiol. 47:343-349.</p>							
<p><i>Remarque</i></p> <p>Also held in the New Zealand Dairy Research Institute Collection.</p>							
<p>Historique</p>							
<p><i>Historique</i></p> <table border="0" data-bbox="105 1045 1516 1512"> <thead> <tr> <th data-bbox="105 1045 1079 1081">Received from</th> <th data-bbox="1101 1045 1516 1081">Date</th> </tr> </thead> <tbody> <tr> <td data-bbox="105 1092 1079 1270"> Dr. A.W. Jarvis New Zealand Dairy Research Institute Private Bag, Palmerston North, New Zealand </td> <td data-bbox="1101 1092 1516 1127"> 19-01-1984 </td> </tr> <tr> <td data-bbox="105 1354 1079 1512"> Isolated by H. A. Heap, New Zealand Dairy Research Institute, Private Bag, Palmerston North, New Zealand. </td> <td data-bbox="1101 1354 1516 1432"> Date 08-1981 </td> </tr> </tbody> </table>		Received from	Date	Dr. A.W. Jarvis New Zealand Dairy Research Institute Private Bag, Palmerston North, New Zealand	19-01-1984	Isolated by H. A. Heap, New Zealand Dairy Research Institute, Private Bag, Palmerston North, New Zealand.	Date 08-1981
Received from	Date						
Dr. A.W. Jarvis New Zealand Dairy Research Institute Private Bag, Palmerston North, New Zealand	19-01-1984						
Isolated by H. A. Heap, New Zealand Dairy Research Institute, Private Bag, Palmerston North, New Zealand.	Date 08-1981						
<p><i>Source</i></p> <p>Cheese whey</p>							
<p><i>Dernière mise à jour</i></p> <p>2024-01-16</p>							