

Numéro HER
196

Identification

| | | |
|-----------------|-----------------------------|---------------------------------|
| Nom φgal-1/R | Morphotype A1 (Myophage) | Autres désignations φGal-1/R |
|-----------------|-----------------------------|---------------------------------|

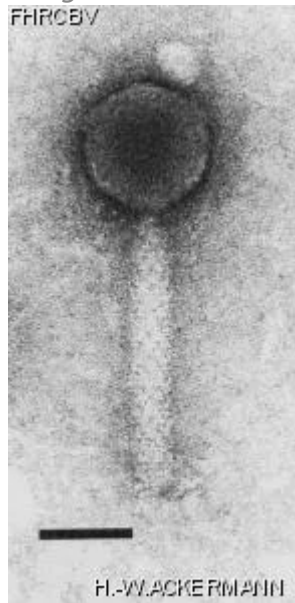
Taxonomie

| | | | |
|---------------------------------|--------------------------------|---|---------------------------------|
| Domaine <i>Duplodnaviria</i> | Règne <i>Heunggongvirae</i> | Embranchement <i>Uroviricota</i> | Classe <i>Caudoviricetes</i> |
| Ordre | Famille | Genre | Espèce |

Images

Photo en microscopie électronique

Image



Description de l'image

Magnification: 297,000X

Bar: 50 nm

Staining: UA

Caractéristique

Plaques: <0.1 mm, veiled.
Typing phage.
Specific for fast-growing Rhizobium strains nodulating Galega plants.
No lysis seen with other fast-growing Rhizobia, such as *R. meliloti*, *R. loti*, *R. trifolii*, and *R. leguminosarum* or *R. phaseoli*.
Patel's medium : Plant Soil, 1978

Séquence génomique

Désactivé

Conditions de propagation

Hôtes bactériens

1196

Référence

Lindström, K., B.D.W. Jarvis, P.E. Lindström, and J.J. Patel. 1983. DNA homology, phage typing, and cross-nodulation studies of rhizobia infecting Galega species. Can. J. Microbiol. 29:781-789.

Remarque

Historique

Historique

Received from

Dr. J.J. Patel
Applied Biochemistry Division,
Department of Scientific and Industrial Research,
Private Bag,
Palmerston North,
New Zealand

Date

10-18-1983

Isolated by

J.J. Patel,
River bank

Date

12-1981

Source

Soil, rhizosphere of *Galega officinalis* (goat's rue)

Dernière mise à jour

2024-01-16