

Numéro HER
52

Identification

Nom II	Morphotype A1 (Myophage)	Autres désignations Group II, 138, ATCC14100-B1	
-----------	-----------------------------	---	--

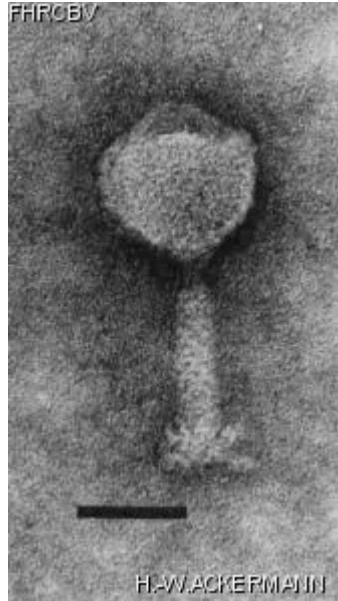
Taxonomie

Domaine <i>Duplodnaviria</i>	Règne <i>Heunggongvirae</i>	Embranchement Uroviricota	Classe <i>Caudoviricetes</i>
Ordre	Famille	Genre	Espèce

Images

Photo en microscopie électronique

Image



Description de l'image

Magnification: 297,000X

Bar: 50 nm

Staining: UA

Caractéristique

Plaques: 0.5- 1mm, clear.
Typing phage No. 2 of set of Mukerjee *et al*.
Typing phage No. 2 of set of Lee and Furniss.

Séquence génomique

Désactivé

Conditions de propagation

Hôtes bactériens

1051

Référence

Mukerjee, D., D. K. Guha, and U. K. Guha Roy. 1957. Studies on typing of cholera by bacteriophage. Part I. Phage typing of *Vibrio cholerae** from Calcutta epidemics. *Annals of Biochemistry and Experimental Medicine* 17:161-176.

Chanda PK, Ghosh NC. 1978. Characteristics of a cholera phage. *Arch Microbiol* 119:303-304.

Balganesh M, Das J. 1979. Transfection of *Vibrio cholerae** by bacteriophage ϕ 149 DNA. *Biochem Biophys Res Commun* 90:726-733.

Ackermann H-W, Furniss AL, Kasatiya SS, Lee JV, Mbiguino A, Newman FS, Takeya K, Vieu J-F. 1983. Morphology of *Vibrio cholerae** typing phages. *Ann Virol (Inst. Pasteur)* 134E:387-404.

Ackermann H-W, Kasatiya SS, Kawata T, Koga T, Lee JV, Mbiguino A, Newman FS, Vieu J-F, Zachary A. 1984. Classification of *Vibrio** bacteriophages. *Intervirology* 22:61-71.

Chatterjee SN, Maiti M. 1984. Vibriophages and vibriocins: physical, chemical and biological properties. *Adv Virus Res* 29:263-312.

Das J, Chatterjee SN. 1966. Electron microscopy of cholera bacteriophages. *Proc 6th Internat Electron Microsc (Kyoto 1966)*, Vol 2, 139-140, ed Uyeda R. Maruzen Co., Tokyo.

Degtyarev BM, Milyutin VN, Arutyunov Yul, Mikhailov AM, Tokarev SA. 1977. Electron microscopic examination of the structure of cholera bacteriophage of serotype II (Russian). *Vop Virusol* 22:237-241.

Chanda PK, Ghosh NC. 1978. Characteristics of a cholera phage. *Arch Microbiol* 119:303-304.

Bystryi NF, Drozhevskina MS. 1979. Basic criteria and classification scheme for bacteriophages acting against cholera vibrios of the classical and El Tor biotypes (Russian). *Zh Hyg Epidemiol Mikrobiol Immunobiol* 23(1):85-94.

Chatterjee SN, Das J, Barua D. 1985. Electron microscopy of cholera phages. *Indian J Med Res* 53:934-937.

Remarque

Not available from the Félix d'Hérelle reference center for bacterial viruses, please contact ATCC for the distribution of this phage.

Historique

Historique

Received from

ATCC

Date

11-1979

Received from

S. Mukerjee,
Indian Institute for biochemistry and experimental
medecine,
Calcutta;
WHO, International Reference Center for *Vibrio* Phage
Typing, Calcutta, India.

Date

Source

Stool of cholera patient. Calcutta, India

Dernière mise à jour

2024-01-15