

*HER number*  
389

## Identification

|                    |                                    |                           |
|--------------------|------------------------------------|---------------------------|
| <i>Name</i><br>389 | <i>Morphotype</i><br>A1 (Myophage) | <i>Other designations</i> |
|--------------------|------------------------------------|---------------------------|

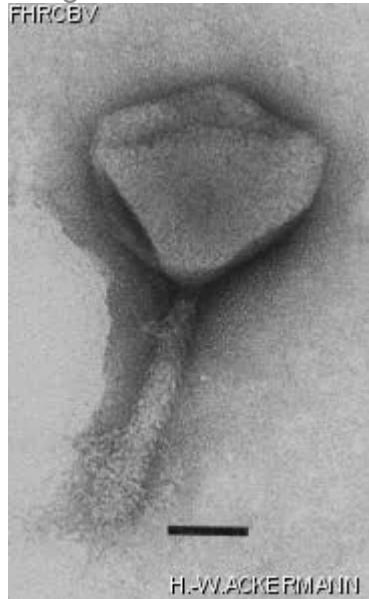
## Taxonomy

|              |                     |               |                |
|--------------|---------------------|---------------|----------------|
| <i>Realm</i> | <i>Kingdom</i>      | <i>Phylum</i> | <i>Class</i>   |
| <i>Order</i> | <i>Family</i><br>?1 | <i>Genus</i>  | <i>Species</i> |

## Images

*Electron Micrograph*

*Image*



*Image description*

Magnification: 297,000X

Bar: 50 nm

Staining: UA

*Characteristics*  
Clear plaques of 1.5 mm.

*Genomic sequence*  
Deactivated

## Propagation conditions

*Bacterial hosts*

1371

*Reference*

Pate, J.L., S.J. Petzold, L.Y.E. Chang. 1979. Phages for the gliding bacterium \*Cytophaga johnsonae\* that infect only motile cells. Curr. Microbiol. 2: 257-262.

*Remarks*

## History

*History*

**Isolated by**

Dr Jack L. Pate  
Dept. of Bacteriology  
University of Wisconsin-Madison  
1550 Linden Drive  
Madison, WI 53706, USA

**Date**

1979

**Received from**

A. Quinones  
Dept. of Bacteriology  
University of Wisconsin  
Madison, WI 53706, USA

**Date**

24-04-1991

*Source*

Pond water

*Updated at*

2024-01-22