

HER number

376

Identification

Name
 φCR30

Morphotype
 A1 (Myophage)

Other designations

Taxonomy

Realm

Kingdom

Phylum

Class

Order

Family
 ?1

Genus

Species

Images

Electron Micrograph

Image

FHRCEW

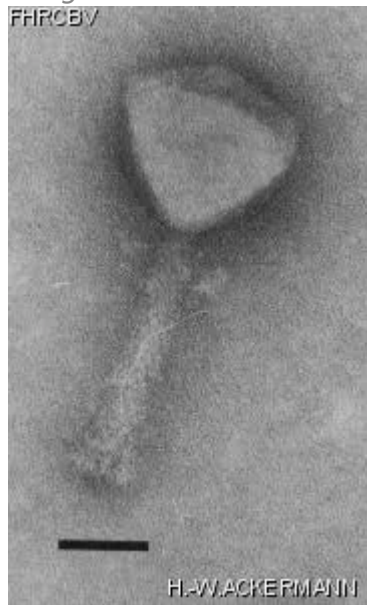


Image description

Magnification: 297,000X

Bar: 50 nm

Staining: UA

Characteristics

Clear plaques of 0.25 mm.

Genomic sequence

Activated

Propagation conditions

Bacterial hosts

1376

Reference

Johnson, R.C., N.B. Wood, B. Ely. 1977. Isolation and characterization of bacteriophages for *Caulobacter crescentus*. J. Gen. Virol. 37: 323-335.

Remarks

More observable plaques are seen when using 0.3% top agar.
Collar whiskers.

History

History

Received from

Dr Dickson Alley
Dept. of Developmental Biology
Beckman Center, Stanford School of Medicine
Stanford University
Stanford, California 94305-5427, USA

Date

06-08-1990

Isolated by

Dr R.C. Johnson
Dept. of Biology
University of South Carolina
Columbia, SC 29208, USA

Date

1976 or earlier

Source

Pond water

Updated at

2024-01-22