

*HER number*

374

## Identification

*Name*

K30

*Morphotype*

C1 (Podophage)

*Other designations*

ϕK30

## Taxonomy

*Realm*

*Kingdom*

*Phylum*

*Class*

*Order*

*Family*

*Autographiviridae*

*Genus*

*Przondovirus*

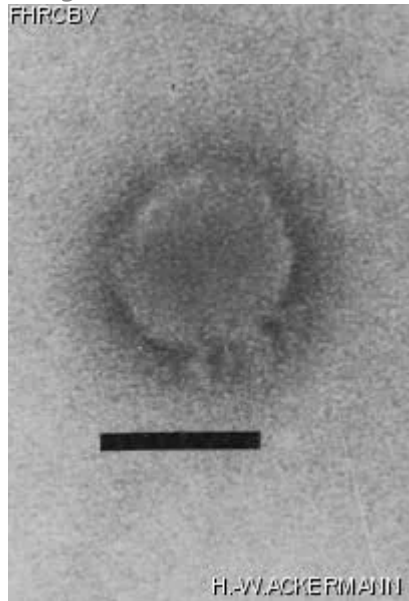
*Species*

*Przondovirus K30*

## Images

*Electron Micrograph*

*Image*



*Image description*

Magnification: 297,000X

Bar: 50 nm

Staining: UA

*Characteristics*

Plaques of 2 mm. Target-like. Halo.

*Genomic sequence*

Activated

## Propagation conditions

### *Bacterial hosts*

1374

### *Reference*

Whitfield, C., M. Lam. 1986. FEMS Microbiol. Lett. 37: 351-355.

### *Remarks*

Specific for \*E. coli\* expressing K30 capsular polysaccharide.

## History

### *History*

#### **Received from**

Dr C. Whitfield  
Dept. of Microbiology  
University of Guelph  
Guelph, Ontario, Canada  
N1G 2W1

#### **Date**

14-12-1990

#### **Isolated by**

Dr C. Whitfield  
Davis, CA

#### **Date**

1984

### *Source*

Sewage

### *Updated at*

2024-01-22