

*HER number*  
366

## Identification

<i>Name</i> 366	<i>Morphotype</i> A2 (Myophage)	<i>Other designations</i>
--------------------	------------------------------------	---------------------------

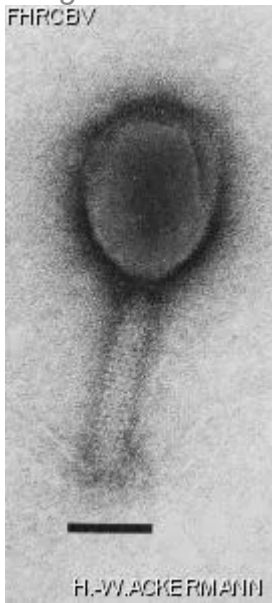
## Taxonomy

<i>Realm</i>	<i>Kingdom</i>	<i>Phylum</i>	<i>Class</i>
<i>Order</i>	<i>Family</i> ?1	<i>Genus</i>	<i>Species</i>

## Images

*Electron Micrograph*

*Image*  
FHRCEV



*Image description*

Magnification: 297,000X  
Bar: 50 nm  
Staining: UA

*Characteristics*

Clear plaques of 1.0 mm.  
Uses the OmpF porin plus LPS as receptor.

*Genomic sequence*

Deactivated

## Propagation conditions

*Bacterial hosts*

1366

*Reference*

Hancock, R.E., P. Reeves. 1975. Bacteriophage resistance in \*Escherichia coli\* K-12: general pattern of resistance. J. Bacteriol. 121: 983-993.

*Remarks*

## History

*History*

**Received from**

Thomas Silhavy

**Date**

**Received from**

Dr Spencer A. Benson  
Dept. of Microbiology  
University of Maryland  
College Park, Maryland 20742-4451, USA

**Date**

20-04-1990

*Source*

*Updated at*

2024-01-19