

*HER number*  
354

## Identification

<i>Name</i> 354	<i>Morphotype</i> F1	<i>Other designations</i>
--------------------	-------------------------	---------------------------

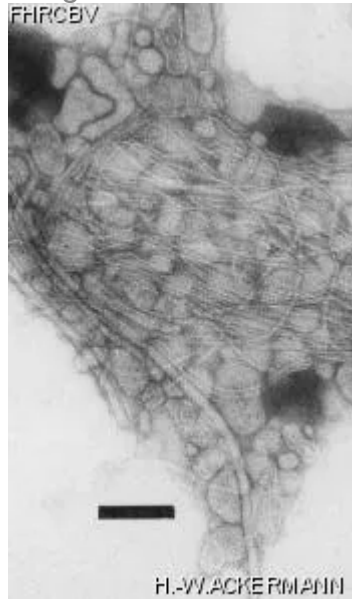
## Taxonomy

<i>Realm</i>	<i>Kingdom</i>	<i>Phylum</i>	<i>Class</i>
<i>Order</i>	<i>Family</i> ?1	<i>Genus</i>	<i>Species</i>

## Images

*Electron Micrograph*

*Image*



*Image description*

Magnification: 92,400X

Bar: 100 nm

Staining: PT

*Characteristics*  
Plaques: 1 mm, veiled

*Genomic sequence*  
Deactivated

## Propagation conditions

### *Bacterial hosts*

1354

### *Reference*

Jouravleva, E.A. and coll. 1998. Characterization and possible functions of a new filamentous bacteriophage from \*Vibrio cholerae\* O139. Microbiology. 144: 315-324.

### *Remarks*

## History

### *History*

#### **Received from**

Dr Richard A. Finkelstein  
Department of Molecular Microbiology and Immunology  
DC385.00, Allton Building 208, 308 Business Loop 70 W.  
University of Missouri-Columbia, Columbia, MO 65203

#### **Date**

14-12-1998

#### **Received from**

Dr John Albert  
International Center for Diarrhoeal Disease Research  
Dhaka, Bangladesh

#### **Date**

1994

#### **Isolated by**

Dr John Albert

#### **Date**

1994

### *Source*

Patient stool

### *Updated at*

2024-01-19