

HER number
345

Identification

Name 345	Morphotype A1 (Myophage)	Other designations ?ATCC	
-------------	-----------------------------	-----------------------------	--

Taxonomy

Realm	Kingdom	Phylum	Class
Order	Family ?1	Genus	Species

Images

Electron Micrograph

Image

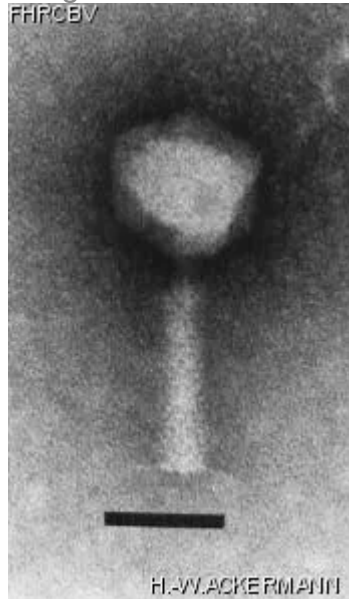


Image description

Magnification: 297,000X

Bar: 50 nm

Staining: PT

<i>Characteristics</i> Clear plaques 0.1-0.5 mm. May be stored with chloroform. Head: 57 nm, Tail: 90x17 nm. Morphologically identical to *Aeromonas* phage 51. Base plate, short fibers 10 nm in length.	<i>Genomic sequence</i> Deactivated		
Propagation conditions			
<i>Bacterial hosts</i> 1345			
<i>Reference</i> Ackermann, H.W. and coll. 1985. *Aeromonas* bacteriophages: reexamination and classification. Ann. Inst. Pasteur (Paris). 136E. 175-199. Shelton, C. B., D. R. Crosslin, J. L. Casey, S. Ng, L. M. Temple, and P. E. Orndorff. 2000. Discovery, purification, and characterization of a temperate transducing bacteriophage for *Bordetella avium*. J. Bacteriol. 182:6130-6.			
<i>Remarks</i>			
History			
<i>History</i> <table><tr><td>Received from Dr Louise Temple Department of Biology Drew University Madison, NJ 07940, USA</td><td>Date 20-11-1998</td></tr></table>		Received from Dr Louise Temple Department of Biology Drew University Madison, NJ 07940, USA	Date 20-11-1998
Received from Dr Louise Temple Department of Biology Drew University Madison, NJ 07940, USA	Date 20-11-1998		
<i>Source</i> Isolated from ATCC35086			
<i>Updated at</i> 2024-01-19			