

HER number

342

Identification

Name

N2

Morphotype

C1 (Podophage)

Other designations

Taxonomy

Realm

Kingdom

Phylum

Class

Order

Family

?1

Genus

Species

Images

Electron Micrograph

Image

FHRCBV

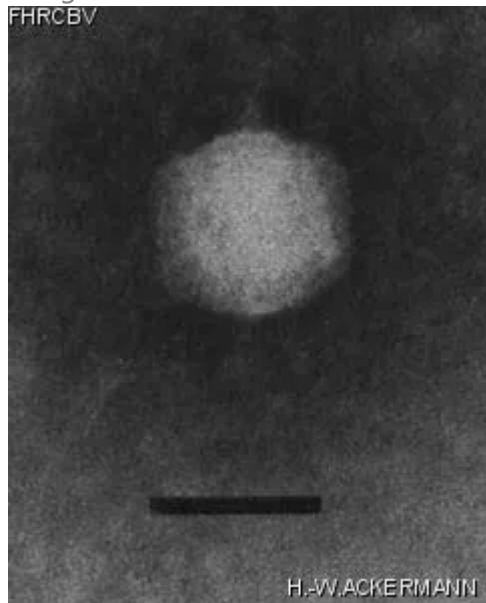


Image description

Magnification: 297,000X

Bar: 50 nm

Staining: PT

<i>Characteristics</i> Clear plaques of 1.0 mm. Temperate phage. Lysogenic host is ATCC 17743.	<i>Genomic sequence</i> Deactivated
--	--

Propagation conditions

Bacterial hosts
1342

Reference
Totsuka, M. 1976. Studies on veillonellophages isolated from washings of human oral cavity. Bull. Tokyo Med. Dent. Univ. 23: 261-273.

Remarks

History

History

Isolated by Nihon Dental College Fujimi-cho, Tioda-ku Nagasaki	Date 01-02-1975
--	---------------------------

Received from Dr M. Totsuka School of Dentistry Dept. of Bacteriology Nagasaki University 7-1 Sakamoto-machi, Nagasaki 852, Japan	Date 30-04-1990
---	---------------------------

Source
Human oral washings

Updated at
2024-01-19