

HER number

334

Identification

Name

Legendre

Morphotype

B1

Other designations

Taxonomy

Realm

Kingdom

Phylum

Class

Order

Family

?1

Genus

Species

Images

Electron Micrograph

Image

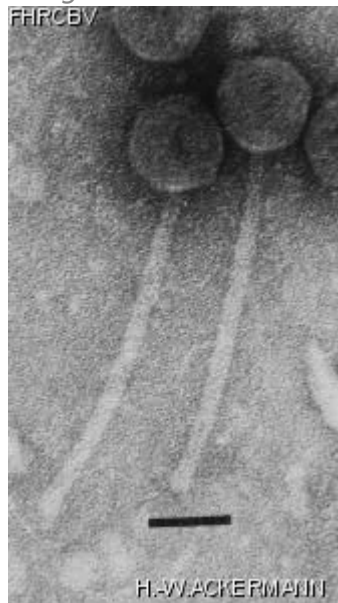


Image description

Magnification: 297,000X

Bar: 50 nm

Staining: UA

<p><i>Characteristics</i></p> <p>Clear plaques of 1.0 mm.</p>	<p><i>Genomic sequence</i></p> <p>Deactivated</p>				
<p>Propagation conditions</p>					
<p><i>Bacterial hosts</i></p> <p>1316</p>					
<p><i>Reference</i></p> <p>Mohelska, H., E. Wisingerova. 1977. Ultrastructural studies of mycobacterial phages isolated from the material of sarcoid patients. J. Hyg. Epidemiol. Microbiol. Immunol. 21: 1-8.</p>					
<p><i>Remarks</i></p>					
<p>History</p>					
<p><i>History</i></p> <table border="0"> <thead> <tr> <th data-bbox="107 940 334 974">Received from</th> <th data-bbox="1101 940 1175 974">Date</th> </tr> </thead> <tbody> <tr> <td data-bbox="107 989 518 1205"> Dr Edith Mankiewicz Lakeshore General Hospital 160 Stillview Pointe-Claire, QC, Canada H9R 2Y2 </td> <td data-bbox="1101 989 1273 1022"> 06-06-1988 </td> </tr> </tbody> </table>		Received from	Date	Dr Edith Mankiewicz Lakeshore General Hospital 160 Stillview Pointe-Claire, QC, Canada H9R 2Y2	06-06-1988
Received from	Date				
Dr Edith Mankiewicz Lakeshore General Hospital 160 Stillview Pointe-Claire, QC, Canada H9R 2Y2	06-06-1988				
<p><i>Source</i></p>					
<p><i>Updated at</i></p> <p>2024-01-19</p>					