

HER number  
325

## Identification

|             |                             |                    |
|-------------|-----------------------------|--------------------|
| Name<br>325 | Morphotype<br>A1 (Myophage) | Other designations |
|-------------|-----------------------------|--------------------|

## Taxonomy

|       |              |        |         |
|-------|--------------|--------|---------|
| Realm | Kingdom      | Phylum | Class   |
| Order | Family<br>?1 | Genus  | Species |

## Images

Electron Micrograph

Image

HER325

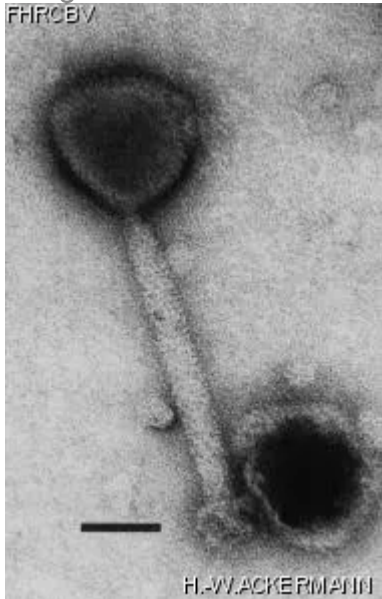


Image description

Magnification: 297,000X

Bar: 50 nm

Staining: UA

Characteristics  
1 mm, clear

Genomic sequence  
Deactivated

## Propagation conditions

### *Bacterial hosts*

1325

### *Reference*

Trevors, K.E., R.A. Holley and A.G. Kempton. 1983. Isolation and characterization of a \*Lactobacillus plantarum\* bacteriophage isolated from a meat starter culture. Journal of Applied Bacteriology 54:281-288.

### *Remarks*

Morphologically identical with phages species TP50 of \*Bacillus\*, Twort of \*Staphylococcus\*, and RSh of \*Streptococcus\*.  
Conspicuous capsomers.

THIS PHAGE IS NOT AVAILABLE FOR THIS MOMENT

## History

### *History*

#### **Received from**

Rick A. Holley  
Food Research Institute  
Agriculture Canada  
Ottawa, Ontario, Canada, K1A 0C6

#### **Date**

#### **Isolated by**

Rick A. Holley  
Food Research Institute  
Agriculture Canada  
Ottawa, Ontario, Canada, K1A 0C6

#### **Date**

09-1979

#### **Received from**

Karen Trevors  
Dept of Biology, Faculty of Science  
University of Waterloo  
Waterloo, Ontario, Canada, N2L 3G1

#### **Date**

25-05-1988

### *Source*

Lyophilized meat starter culture (FERMENTANG BN-1005) B. Heller & Co. Bedford Park, IL 60638, USA

### *Updated at*

2024-01-19