

HER number
314

Identification

<i>Name</i> 314	<i>Morphotype</i> B1 (Siphophage)	<i>Other designations</i>
--------------------	--------------------------------------	---------------------------

Taxonomy

<i>Realm</i>	<i>Kingdom</i>	<i>Phylum</i>	<i>Class</i>
<i>Order</i>	<i>Family</i> ?1	<i>Genus</i>	<i>Species</i> PBP1

Images

Electron Micrograph
Image

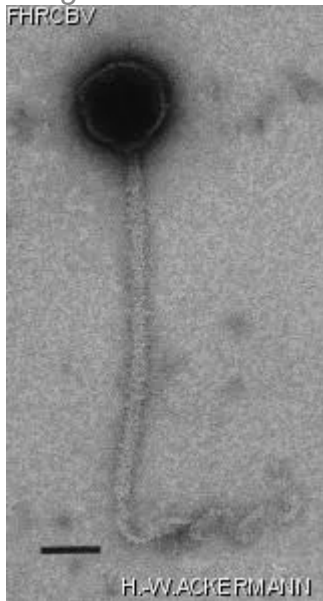


Image description
Magnification: 297,000X
Bar: 50 nm
Staining: UA

<i>Characteristics</i> Plaques: 0.1 - 0.5 mm, clear. Large phage with single long wavy tail fiber. Adsorbs to flagella, specific for motile bacteria.	<i>Genomic sequence</i> Deactivated		
Propagation conditions			
<i>Bacterial hosts</i> 1314			
<i>Reference</i> Lovett, P.S. 1972. PBP1: a flagella specific bacteriophage mediating transduction in *Bacillus pumilus*. Virology. 47:743-752.			
<i>Remarks</i>			
History			
<i>History</i> <table><tr><td>Received from Dr P.S. Lovett Dept. of Biological Sciences University of Maryland Baltimore County Campus Catonsville, Maryland 21228, USA</td><td>Date 02-05-1988</td></tr></table>		Received from Dr P.S. Lovett Dept. of Biological Sciences University of Maryland Baltimore County Campus Catonsville, Maryland 21228, USA	Date 02-05-1988
Received from Dr P.S. Lovett Dept. of Biological Sciences University of Maryland Baltimore County Campus Catonsville, Maryland 21228, USA	Date 02-05-1988		
<i>Source</i>			
<i>Updated at</i> 2024-01-19			