

HER number

311

Identification

Name

π (pi)

Morphotype

B1 (Siphophage)

Other designations

Taxonomy

Realm

Kingdom

Phylum

Class

Order

Family

?1

Genus

Species

Images

Electron Micrograph

Image

FHRCEV

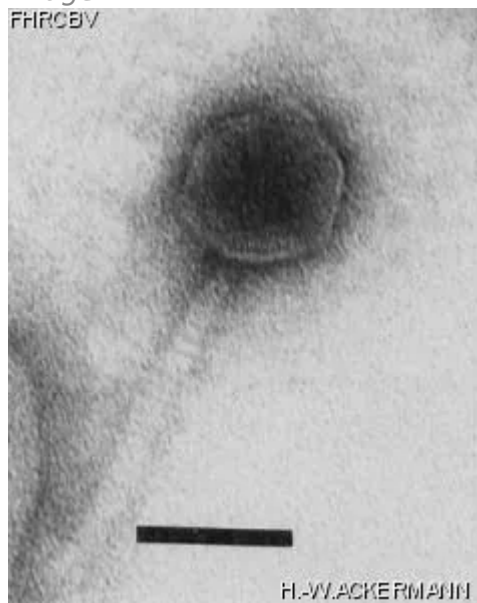


Image description

Magnification: 297,000X

Bar: 50 nm

Staining: UA

<i>Characteristics</i> Clear plaques of 0.5mm	<i>Genomic sequence</i> Deactivated
Propagation conditions	
<i>Bacterial hosts</i> 1311	
<i>Reference</i> Pons, F.W. 1966. Biochem. Z. 346:26-40. (En allemand/In deutsch)	
<i>Remarks</i> May be a virulent mutant of ?(HER313). Uses the same receptor as ?, forms large, clear plaques containing a few bacterial colonies which are resistant to ? and ?. Pre-adsorption to indicator bacteria is not required for adsorption. Plates inoculated with 10 ⁹ bacteria and 15 000 PFU yield 5x10 ¹² phages (extraction with 5mL saline).	
History	
<i>History</i>	
Received from Dr F.W. Pons Institut für Mikrobiologie Johann Wolfgang Goethe-Universität Theodor-Stern-Kai 7, Haus 75A D-6000 Frankfurt am Main, Germany	Date 03-03-1988
Isolated by Dr F.W. Pons	Date 1975
<i>Source</i> Appeared on an indicator plate seeded with *S. marcescens* CV (η, Σ)	
<i>Updated at</i> 2024-01-19	