

*HER number*

302

## Identification

*Name*

P270

*Morphotype*

B1 (Siphophage)

*Other designations*

## Taxonomy

*Realm*

*Kingdom*

*Phylum*

*Class*

*Order*

*Family*

?1

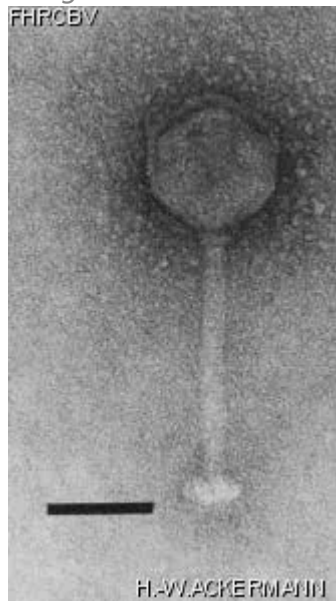
*Genus*

*Species*

## Images

*Electron Micrograph*

*Image*



*Image description*

Magnification: 297,000X

Bar: 50 nm

Staining: UA

<i>Characteristics</i> Clear plaques of 0.5 to 1.0mm Collar	<i>Genomic sequence</i> Deactivated
<b>Propagation conditions</b>	
<i>Bacterial hosts</i> 1228	
<i>Reference</i> Lembke, J., U. Krusch, A. Lompe, and M. Teuber. 1980. Isolation and ultrastructure of bacteriophages of group N (lactic) streptococci. Zentralbl. Bakteriol. Mikrobiol. Hyg. Abt. I Orig. C 1:79-91.	
<i>Remarks</i> Morphologically identical with P335, replaces P335 as type virus	
<b>History</b>	
<i>History</i>	
<b>Received from</b> Dr H. Neve Institut für Mikrobiologie Bundesanstalt für Milchwissenschaft Postfach 60 69, D-2300 Kiel 14, Germany	<b>Date</b> 12-12-1987
<b>Isolated by</b> Federal Dairy Research Center, Kiel, West Germany	<b>Date</b> 1970
<i>Source</i> French butter cheese	
<i>Updated at</i> 2024-01-19	