

*HER number*  
296

### Identification

<i>Name</i> 296	<i>Morphotype</i> B1 (Siphophage)	<i>Other designations</i>	
--------------------	--------------------------------------	---------------------------	--

### Taxonomy

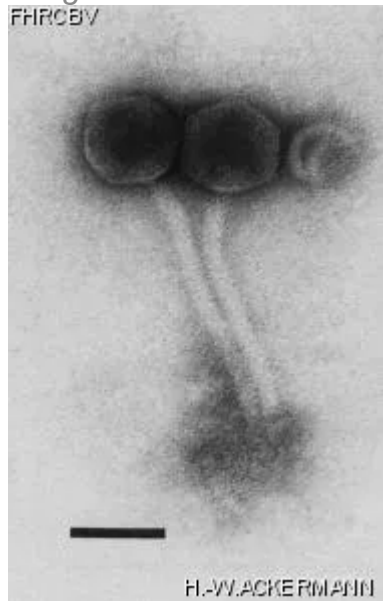
<i>Realm</i>	<i>Kingdom</i>	<i>Phylum</i>	<i>Class</i>
<i>Order</i>	<i>Family</i> ?1	<i>Genus</i>	<i>Species</i>

### Images

*Electron Micrograph*

*Image*

FHRCBY



*Image description*

Magnification: 297,000X

Bar: 50 nm

Staining: UA

*Characteristics*

Plaques between 1.0 and 1.5 mm.  
Inducible by mitomycin C (over 5mg/mL).

*Genomic sequence*

Deactivated

## Propagation conditions

### *Bacterial hosts*

1278

### *Reference*

Rauch, C.H., and M.J. Pickett. 1961. Can. J. Microbiol. 7:125-132.

### *Remarks*

Said to be labile.

## History

### *History*

#### **Isolated by**

Dr I.A. Lapaeva  
Gamaleya Research Institute  
Moscow, Russia

#### **Date**

09-04-1987

#### **Received from**

Dr I.A. Lapaeva  
Laboratory of Respiratory Infections  
Gamaleya Research Institute of Epidemiology and  
Microbiology  
Gamaleya st. 18, Moscow 123098  
Russia

#### **Date**

14-07-1987

### *Source*

Strain of \*B. bronchiseptica\* 8101

### *Updated at*

2024-01-19