

HER number

292

Identification

Name

392

Morphotype

B1 (Siphophage)

Other designations

Taxonomy

Realm

Kingdom

Phylum

Class

Order

Family

?1

Genus

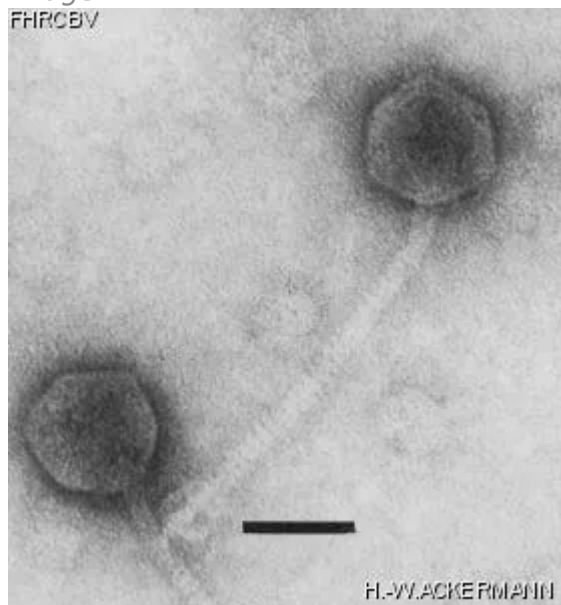
Species

Images

Electron Micrograph

Image

FHRC6V



H.-WACKERMANN

Image description

Magnification: 297,000X

Bar: 50 nm

Staining: UA

<p><i>Characteristics</i></p> <p>Veiled plaques of 0.5 mm on TSA and LB agar.</p> <p>Clear plaques of 2-3 mm on BHI agar.</p> <p>Double base plate.</p>	<p><i>Genomic sequence</i></p> <p>Deactivated</p>
---	---

Propagation conditions

Bacterial hosts

1292

Reference

Bes, M. 1994. Characterization of thirteen *Staphylococcus epidermidis** and *S. saprophyticus** bacteriophages. Res. Virol. 145:111-121.

Remarks

Phage propagation :
30°C and CaCl₂

History

History

Received from

Michèle Bes
C.E.R.B., Faculté de Médecine Alexis-Carrel
Centre National de Référence des Staphylocoques
Rue Guillaume Paradin, 69372 Lyon Cédex 08, France

Date

19-06-1987

Isolated by

Michèle Bes
C.E.R.B., Faculté de Médecine Alexis-Carrel

Date

1980

Source

*S. epidermis** 392 (HER 1241)

Updated at

2024-01-19