

HER number  
278

## Identification

Name 278	Morphotype B1 (Siphophage)	Other designations
-------------	-------------------------------	--------------------

## Taxonomy

Realm	Kingdom	Phylum	Class
Order	Family ?1	Genus	Species

## Images

Electron Micrograph

Image

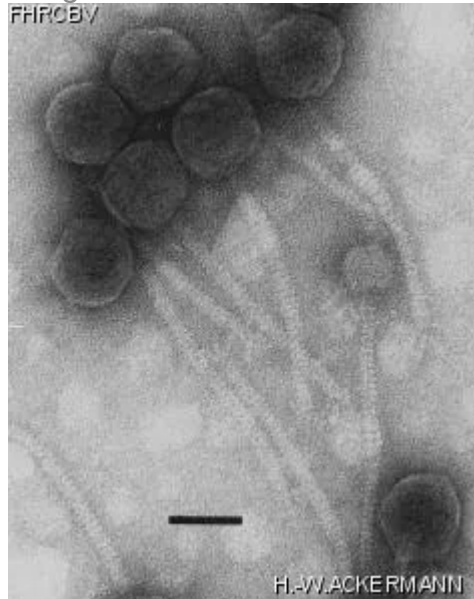


Image description

Magnification: 297,000X

Bar: 50 nm

Staining: UA

Characteristics  
Plaques of 1.0 to 1.5 mm.

Genomic sequence  
Deactivated

## Propagation conditions

### *Bacterial hosts*

1278

### *Reference*

Lapaeva, I.A., S.M. Mebel, N.A. Pereverzev, and L.N. Sinyashina. 1980. \*Bordetella pertussis\* bacteriophage. Zh. Mikrobiol. Epidemiol. Immunobiol. 85-90.

Mebel, S., I.A. Lapaeva, S. Rustenbach, and I. Uerling. 1981. Spontaneous release of phage from strains of \*Bordetella pertussis\* used for vaccine production. FEMS Microbiol. Lett. 12: 233-235.

### *Remarks*

Morphologically unstable in cesium chloride gradient at average density 1.45 g/cm<sup>3</sup>. Also held in the Collection of the WHO Collaborating Center for Research and Reference on \*Bordetella pertussis\*, Gamaleya Institute, Moscow.

## History

### *History*

#### **Received from**

Dr I.A. Lapaeva  
Laboratory of Respiratory Infections  
Gamaleya Research Institute of Epidemiology  
Moscow 123098, Gamaleya st. 18, Russia

#### **Date**

10-12-1986

#### **Isolated by**

Irina Lapaeva  
Gamaleya Institute of Epidemiology and Microbiology  
Moscow

#### **Date**

1986

### *Source*

\*Bordetella pertussis\* Tohama phase I

### *Updated at*

2024-01-19