

HER number
251

Identification

<i>Name</i> 251	<i>Morphotype</i> A1 (Myophage)	<i>Other designations</i>
--------------------	------------------------------------	---------------------------

Taxonomy

<i>Realm</i>	<i>Kingdom</i>	<i>Phylum</i>	<i>Class</i>
<i>Order</i>	<i>Family</i> ?1	<i>Genus</i>	<i>Species</i>

Images

Electron Micrograph

Image

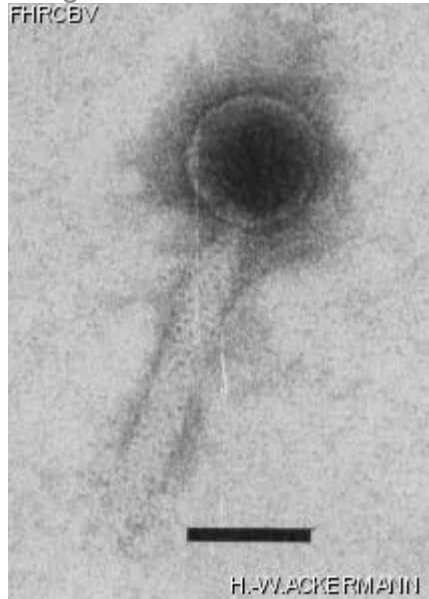


Image description

Magnification: 297,000X

Bar: 50 nm

Staining: UA

Characteristics
Plaques of 0.5mm, target-like.

Genomic sequence
Deactivated

Propagation conditions	
<i>Bacterial hosts</i> 1251	
<i>Reference</i> Ito, S-I, T. Nishimune, M. Abe, M. Kimoto, and R. Hayashi. 1986. Bacteriocin-like killing action of a temperate bacteriophage ϕ BA1 of <i>Bacillus aneurinolyticus</i> . J. Virol. 59: 103-111.	
<i>Remarks</i> Lysate contains A1-type phages and contractile tails produced by the propagating strain.	
History	
<i>History</i>	
Isolated by S.-I. Ito Then Yamaguchi University, Ube, Yamaguchi 755 Japan	Date 10-02-1983
Received from S.-I. Ito Laboratory of Biochemistry Department of Agricultural Chemistry Tokyo University, Bunraku-ku, Tokyo Japan	Date 10-09-1986
<i>Source</i> Culture of <i>B. aneurinolyticus</i> after mitomycin C induction	
<i>Updated at</i> 2024-01-17	