

*HER number*  
248

## Identification

<i>Name</i> 248	<i>Morphotype</i> C3 (Podophage)	<i>Other designations</i>
--------------------	-------------------------------------	---------------------------

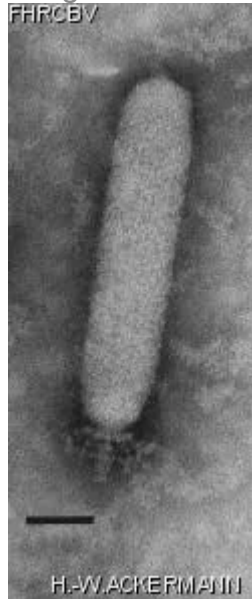
## Taxonomy

<i>Realm</i> Duplodnaviria	<i>Kingdom</i> Heunggongvirae	<i>Phylum</i> <a href="#">Uroviricota</a>	<i>Class</i> Caudoviricetes
<i>Order</i>	<i>Family</i>	<i>Genus</i> Chopinvirus	<i>Species</i> Chopinvirus KSY1

## Images

*Electron Micrograph*

*Image*



*Image description*

Magnification: 297,000X

Bar: 50 nm

Staining: PT

*Characteristics*

Plaques of 1 mm with halo after two days.

*Genomic sequence*

Activated

## Propagation conditions

### *Bacterial hosts*

1248

### *Reference*

Kalso, S., E.-L. Nurmiäho-Lassila, M.-L. Saxelin, and V. Sundman. 1986. Some characteristics of the lactic streptococcal phage KSY1. *Milchwissenschaft* 41:65-68.

### *Remarks*

Held in another permanent collection :  
Department of General Microbiology  
University of Helsinki  
Mannerheimintie 172, SF-00280 Helsinki 28  
Finland

## History

### *History*

#### **Received from**

Dr Maija-Liisa Saxelin  
Product Development Division  
Research and Development Department  
VALIO Finnish Cooperative Dairies Association  
P.O. Box 390, SF-00101 Helsinki, Finland

#### **Date**

01-08-1986

#### **Isolated by**

Dr Maija-Liisa Saxelin  
Department of General Microbiology  
University of Helsinki  
Finland

#### **Date**

1977

### *Source*

Finnish cultured milk product "viili"

### *Updated at*

2024-01-17