

*HER number*  
240

## Identification

<i>Name</i> 240	<i>Morphotype</i> E1	<i>Other designations</i> H?
--------------------	-------------------------	---------------------------------

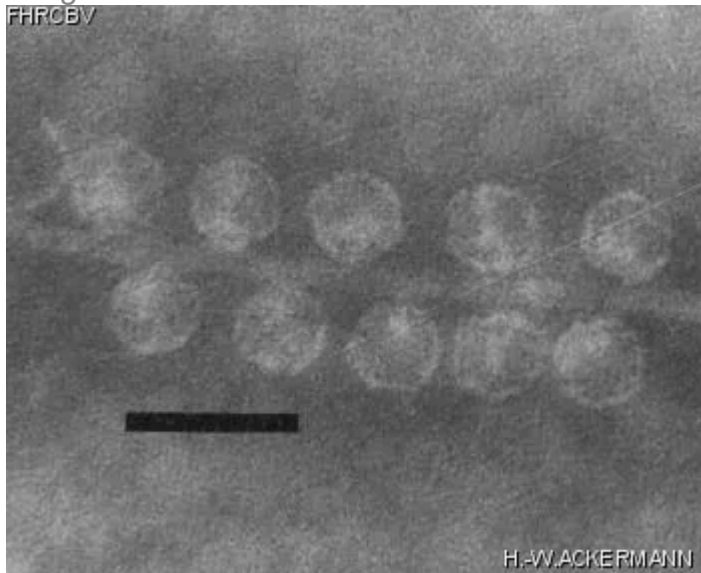
## Taxonomy

<i>Realm</i>	<i>Kingdom</i>	<i>Phylum</i>	<i>Class</i>
<i>Order</i>	<i>Family</i> ?1	<i>Genus</i>	<i>Species</i>

## Images

*Electron Micrograph*

*Image*  
FHRCBV



*Image description*

Magnification: 297,000X

Bar: 50 nm

Staining: PTB

<p><i>Characteristics</i></p> <p>Veiled plaques, 0.1 to 1mm.          Adsorbs to IncHI and IncHII plasmid-coded pili.          Preparations are rich in broken pili with adsorbed phages.          Propagating strain : *E. coli* K12 containing R27::TnlacZ (resistant to kanamycin and tetracycline)</p>	<p><i>Genomic sequence</i></p> <p>Deactivated</p>
<p><b>Propagation conditions</b></p>	
<p><i>Bacterial hosts</i></p> <p>1240</p>	
<p><i>Reference</i></p> <p>Coetzee, J.N., D.E. Bradley, J. Fleming, L. du Toit, V.M. Hughes, and R.W. Hedges. 1985. Phage pilH?: a phage which adsorbs to IncHI and IncHII plasmid-coded pili. J. Gen. Microbiol. 131:1115-1121.</p>	
<p><i>Remarks</i></p>	
<p><b>History</b></p>	
<p><i>History</i></p>	
<p><b>Received from</b>          (replacement phage)          Dr Diane E. Taylor          University of Alberta          Department of Medical Microbiology and Infectious diseases          Edmonton, Alberta, T6G 2H7</p>	<p><b>Date</b>          07-01-1993</p>
<p><b>Received from</b>          J.N. Coetzee          Institute for Pathology          P.O. Box 2034          Pretoria 0001          South Africa</p>	<p><b>Date</b>          27-03-1987</p>
<p><b>Isolated by</b>          J.N. Coetzee          Pretoria, South Africa</p>	<p><b>Date</b>          early 1980?s</p>

*Source*  
**Sewage**

*Updated at*  
**2024-01-17**