

*HER number*

225

## Identification

*Name*

3A

*Morphotype*

B2 (Siphophage)

*Other designations*

## Taxonomy

*Realm*

Duplodnaviria

*Kingdom*

Heunggongvirae

*Phylum*

[Uroviricota](#)

*Class*

Caudoviricetes

*Order*

*Family*

*Genus*

Triavirus

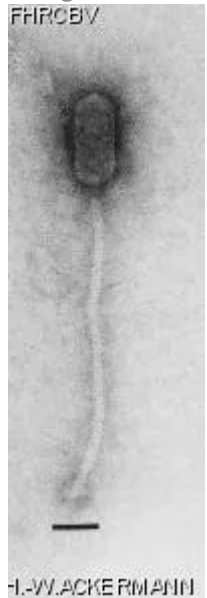
*Species*

Triavirus tv3a

## Images

*Electron Micrograph*

*Image*



*Image description*

Magnification: 297,000X

Bar: 50 nm

Staining: UAB

*Characteristics*

Clear plaques smaller than 0.1 mm.  
Serogroup A, part of international typing set.  
Multiple morphological aberrations.

*Genomic sequence*

Activated

## Propagation conditions

*Bacterial hosts*

1225

*Reference*

Lapchine, L., and L. Enjalbert. 1965. étude morphologique de quelques phages staphylococciques. J. Microsc. 4:33-42.

*Remarks*

## History

*History*

**Received from**

E. Pauline Ewan  
Head Special Bacteriology Section  
Bureau of Microbiology LCDC  
Tunney's Pasture, Ottawa, Ontario, K1A 0L2  
Canada

**Date**

01-14-1985

**Received from**

International Reference Center for Staphylococcus  
Phage Typing  
Colindale, London  
England

**Date**

*Source*

*Updated at*  
2024-01-17