

HER number
213

Identification

<i>Name</i>	<i>Morphotype</i>	<i>Other designations</i>
I2-2	F1	

Taxonomy

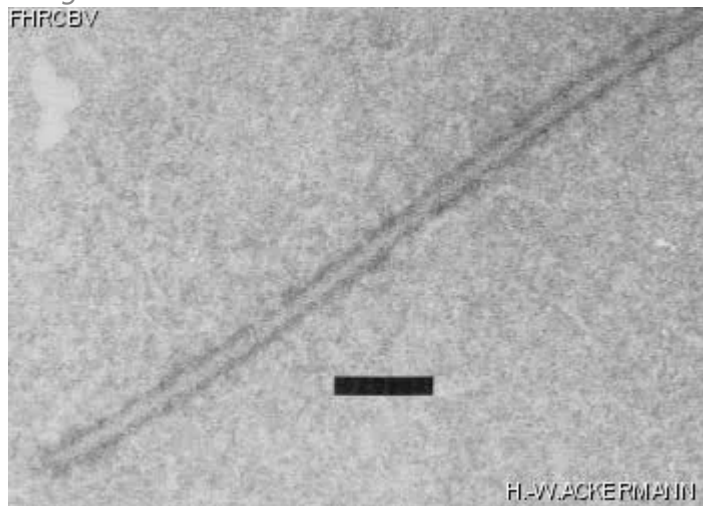
<i>Realm</i> Monodnaviria	<i>Kingdom</i> Loebvirae	<i>Phylum</i> Hofneiviricota	<i>Class</i> Faserviricetes
<i>Order</i> Tubulavirales	<i>Family</i> Inoviridae	<i>Genus</i> Lineavirus	<i>Species</i> Lineavirus I22

Images

Electron Micrograph

Image

FHRCEV



H. WACKERMANN

Image description

Magnification: 92,400X

Bar: 100 nm

Staining: UA

Characteristics

Plaques: <0.1mm, veiled.
Filamentous phage serologically related to phage I_{ke}.
Marked variation in length.
Adsorbs to tips of InC12 plasmid-encoded pili.
Alternative host : *S. typhimurium* M827-2(R721pilC).
Plasmid R721pilC is a derivative of plasmid R721 which produces pili constitutively.

Genomic sequence

Activated

Propagation conditions

Bacterial hosts

1213

Reference

1974. J. Med. Microbiol. 7:169-177.
Coetzee, J.N., D.E. Bradley, and R.W. Hedges. 1982. Phages I_a and I₂-2: InC1 plasmid-dependant bacteriophages. J. Gen. Microbiol. 128:2797-2804.

Remarks

History

History

Received from

J. Schell-M. van Montagu
Laboratorium voor Genetika
Ledeganckstraat 35
B-9000 Gent,
Belgium

Date

10-17-1983

Received from

J.N. Coetzee
Institute for Pathology,
P.O. Box 2034
Pretoria 0001,
South Africa

Date

Isolated by

J.N. Coetzee
Pretoria,
South Africa

Date

Source

Sewage

Updated at

2024-01-16