

HER number
146

Identification

<i>Name</i> 146	<i>Morphotype</i> A1 (Myophage)	<i>Other designations</i> ATCC15692-B3, PB1
--------------------	------------------------------------	--

Taxonomy

<i>Realm</i>	<i>Kingdom</i>	<i>Phylum</i>	<i>Class</i>
<i>Order</i>	<i>Family</i> ?1	<i>Genus</i> <i>Pbunavirus</i>	<i>Species</i> <i>Pbunavirus PB1</i>

Images

Electron Micrograph

Image

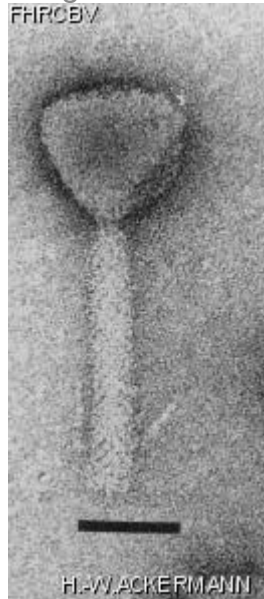


Image description

Magnification: 297,000X

Bar: 50 nm

Staining: UA

Characteristics

Genomic sequence

Activated

Propagation conditions	
<i>Bacterial hosts</i> 1146	
<i>Reference</i> Bradley, D. E. and D. Robertson. 1968. The structure and infective process of a contractile *Pseudomonas aeruginosa* bacteriophage. J. Gen. Virol. 3:247-254.	
<i>Remarks</i>	
History	
<i>History</i>	
Received from American Type Culture Collection, 12301 Parklawn Drive, Rockville, Maryland, 20852, USA.	Date 15-10-1982
Isolated by D. E. Bradley	Date 1968
<i>Source</i> Sewage	
<i>Updated at</i> 2024-01-16	