

HER number

118

Identification

Name

N3 Lesley

Morphotype

A1 (Myophage)

Other designations

N3, 6a

Taxonomy

Realm

Duplodnaviria

Kingdom

Heunggongvirae

Phylum

[Uroviricota](#)

Class

Caudoviricetes

Order

Family

Genus

Emdodecavirus

Species

Emdodecavirus N3

Images

Electron Micrograph

Image

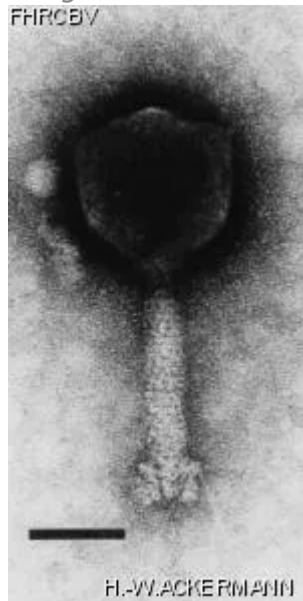


Image description

Magnification: 297,000X

Bar: 50 nm

Staining: UAB

<p><i>Characteristics</i></p> <p>Plaques: 0.1- 0.5mm, clear. Typing phage. Lesley: YSM double agar layer, 48h. Lysate contains variable amount of NM1-type phage.</p>	<p><i>Genomic sequence</i></p> <p>Activated</p>								
<p>Propagation conditions</p>									
<p><i>Bacterial hosts</i></p> <p>1118</p>									
<p><i>Reference</i></p> <p>Can. J. Microbiol. 1982. 28:180-189.</p>									
<p><i>Remarks</i></p>									
<p>History</p>									
<p><i>History</i></p> <table border="0"> <tr> <td data-bbox="107 1142 334 1173">Received from</td> <td data-bbox="1101 1142 1175 1173">Date</td> </tr> <tr> <td data-bbox="107 1186 927 1312">S. M. Lesley, Chemistry and Biology Research Institute, Research Branch, Agriculture Canada, Ottawa, ON. Canada, K1A 0C6</td> <td data-bbox="1101 1186 1273 1218">06-21-1982</td> </tr> <tr> <td data-bbox="107 1400 282 1432">Isolated by</td> <td data-bbox="1101 1400 1175 1432">Date</td> </tr> <tr> <td data-bbox="107 1444 566 1476">S. M. Lesley and I. Sinha, CRBI.</td> <td data-bbox="1101 1444 1224 1476">03-1979</td> </tr> </table>		Received from	Date	S. M. Lesley, Chemistry and Biology Research Institute, Research Branch, Agriculture Canada, Ottawa, ON. Canada, K1A 0C6	06-21-1982	Isolated by	Date	S. M. Lesley and I. Sinha, CRBI.	03-1979
Received from	Date								
S. M. Lesley, Chemistry and Biology Research Institute, Research Branch, Agriculture Canada, Ottawa, ON. Canada, K1A 0C6	06-21-1982								
Isolated by	Date								
S. M. Lesley and I. Sinha, CRBI.	03-1979								
<p><i>Source</i></p> <p>Local soil, Ottawa, Ontario, Canada.</p>									
<p><i>Updated at</i></p> <p>2024-01-16</p>									