

*HER number*  
112

## Identification

<i>Name</i> 112	<i>Morphotype</i> B1 (Siphophage)	<i>Other designations</i> 1
--------------------	--------------------------------------	--------------------------------

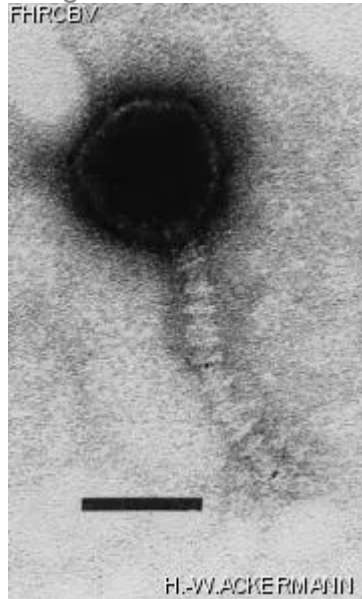
## Taxonomy

<i>Realm</i>	<i>Kingdom</i>	<i>Phylum</i>	<i>Class</i>
<i>Order</i>	<i>Family</i> ?1	<i>Genus</i>	<i>Species</i>

## Images

*Electron Micrograph*

*Image*



*Image description*

Magnification: 297,000X

Bar: 50 nm

Staining: UAB

*Characteristics*

Plaques: 0.5- 1mm, clear.

Typing phage.

Read plates after 24- 48h.

*Genomic sequence*

Deactivated

## Propagation conditions

*Bacterial hosts*

1112

*Reference*

Can. J. Microbiol. 1982. 28:180-189.

*Remarks*

## History

*History*

**Isolated by**

S. M. Lesley and I. Sinha, CRBI.

**Date**

02-1979

**Received from**

S. M. Lesley,  
Chemistry and Biology Research Institute,  
Research Branch,  
Agriculture Canada,  
Ottawa, ON. Canada,  
K1A 0C6

**Date**

21-06-1982

*Source*

Soil, Ottawa, Ontario, Canada.

*Updated at*

2024-01-16