

HER number
103

Identification

<i>Name</i> 103	<i>Morphotype</i> B1 (Siphophage)	<i>Other designations</i>
--------------------	--------------------------------------	---------------------------

Taxonomy

<i>Realm</i> <i>Duplodnaviria</i>	<i>Kingdom</i> <i>Heunggongvirae</i>	<i>Phylum</i> <i>Uroviricota</i>	<i>Class</i> <i>Caudoviricetes</i>
<i>Order</i>	<i>Family</i>	<i>Genus</i>	<i>Species</i>

Images

Electron Micrograph

Image

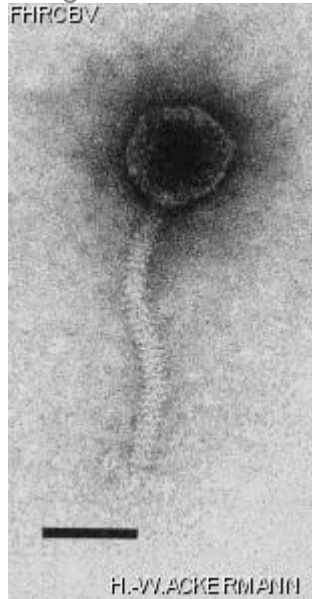


Image description

Magnification: 297,000X

Bar: 50 nm

Staining: UAB

<p><i>Characteristics</i></p> <p>Plaques: 0.5- 1mm, clear, overgrown by motile bacteria ? TYG = Tryptose-Yeast-Glucose. Read plates after 48h.</p>	<p><i>Genomic sequence</i></p> <p>Deactivated</p>								
<p>Propagation conditions</p>									
<p><i>Bacterial hosts</i></p> <p>1103</p>									
<p><i>Reference</i></p> <p>Liew, K. W. and A. M. Alvarez. 1981. Biological and morphological characterization of *Xanthomonas campestris* bacteriophages. Phytopathology 71: 269-273.</p>									
<p><i>Remarks</i></p> <p>Propagation procedure is available upon request.</p>									
<p>History</p>									
<p><i>History</i></p> <table> <tr> <td data-bbox="107 993 326 1024">Received from</td><td data-bbox="1101 993 1170 1024">Date</td></tr> <tr> <td data-bbox="107 1031 545 1260">A. M. Alvarez, Department of plant Pathology, University of Hawaii, 3190 Maile Way, Rm. 305, Honolulu, Hawaii, 96822, USA.</td><td data-bbox="1101 1031 1263 1062">05-26-1982</td></tr> <tr> <td data-bbox="107 1339 272 1371">Isolated by</td><td data-bbox="1101 1339 1170 1371">Date</td></tr> <tr> <td data-bbox="107 1409 501 1440">K.W. Liew and A.M. Alvarez</td><td data-bbox="1101 1377 1271 1409">Before 1981</td></tr> </table>		Received from	Date	A. M. Alvarez, Department of plant Pathology, University of Hawaii, 3190 Maile Way, Rm. 305, Honolulu, Hawaii, 96822, USA.	05-26-1982	Isolated by	Date	K.W. Liew and A.M. Alvarez	Before 1981
Received from	Date								
A. M. Alvarez, Department of plant Pathology, University of Hawaii, 3190 Maile Way, Rm. 305, Honolulu, Hawaii, 96822, USA.	05-26-1982								
Isolated by	Date								
K.W. Liew and A.M. Alvarez	Before 1981								
<p><i>Source</i></p> <p>Soil, cabbage farm, Honolulu, Hawaii</p>									
<p><i>Updated at</i></p> <p>2024-01-16</p>									