

HER number

68

Identification

Name
ε15

Morphotype
C1 (Podophage)

Other designations

Taxonomy

Realm
Duplodnaviria

Kingdom
Heunggongvirae

Phylum
[Uroviricota](#)

Class
Caudoviricetes

Order

Family

Genus
Uetakevirus

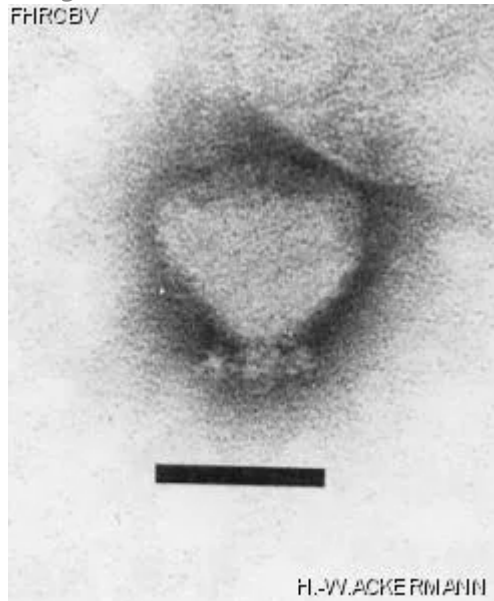
Species
*Uetakevirus
epsilon15*

Images

Electron Micrograph

Image

FHRCEV



H.-WACKERMANN

Image description

Magnification: 297,000X

Bar: 50 nm

Staining: PT

Characteristics

Plaques: 0.1-0.5mm, veiled, halo 1mm.
Converting phage.
Temperate
Lysate contains small amounts of intact or damaged P2-like phages.

Genomic sequence

Activated

Propagation conditions

Bacterial hosts

1068

Reference

Vieu, J.-F., O. Croissant, and C. Dauguet. 1965. Structure des bactériophages responsables des phénomènes de conversion chez les *Salmonella*. Ann. Inst. Pasteur. 109:160-166.

Remarks

History

History

Received from

Dr Francine Grimont,
Institut Pasteur,
Centre National de Référence des Salmonella et des
Shigella,
Unité des entérobactéries,
25-28 rue du Docteur Roux,
75724 Paris Cedex 15,
France

Date

1-19-2000

Source

Updated at

2024-01-16