

*HER number*  
54

## Identification

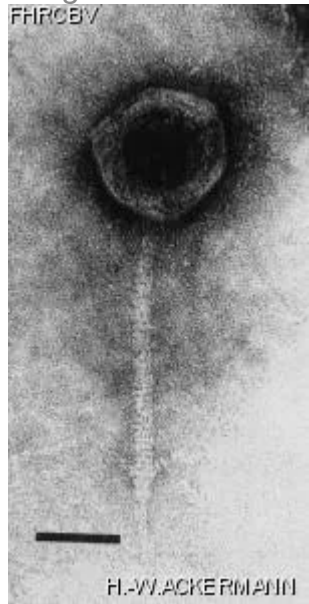
<i>Name</i> 54	<i>Morphotype</i> B1 (Siphophage)	<i>Other designations</i> Group IV, 149, ATCC14100-B3
-------------------	--------------------------------------	---

## Taxonomy

<i>Realm</i>	<i>Kingdom</i>	<i>Phylum</i>	<i>Class</i>
<i>Order</i>	<i>Family</i> ?1	<i>Genus</i>	<i>Species</i>

## Images

*Electron Micrograph*  
*Image*



*Image description*  
Magnification: 297,000X  
Bar: 50 nm  
Staining: UA

<i>Characteristics</i> Plaques: 0.5- 1mm, more or less clear. Typing phage No. 4 of set of Mukerjee *et al*. Typing phage No. 4 of set of Lee and Furniss. T5-like.	<i>Genomic sequence</i> Deactivated
<b>Propagation conditions</b>	
<i>Bacterial hosts</i> 1051	
<i>Reference</i> Chatterjee, S. N., J. Das, D. Barua. 1965. Electron microscopy of cholera phages. India J. Med. Res. 53:934-937.	
<i>Remarks</i> Not available from the Félix dâ€™Hérelle reference center for bacterial viruses, please contact ATCC for the distribution of this phage.	
<b>History</b>	
<i>History</i>	
<b>Received from</b> S. Mukerjee, Indian Institute for biochemistry and experimental medecine, Calcutta; WHO, International Reference Center for *Vibrio* Phage Typing, Calcutta, India.	<b>Date</b>
<b>Received from</b> ATCC	<b>Date</b> 11-1979
<i>Source</i>	
<i>Updated at</i> 2024-01-15	