

*HER number*

45

## Identification

*Name*  
Jersey

*Morphotype*  
B1 (Siphophage)

*Other designations*

## Taxonomy

*Realm*  
*Duplodnaviria*

*Kingdom*  
*Heunggongvirae*

*Phylum*  
[Uroviricota](#)

*Class*  
*Caudoviricetes*

*Order*

*Family*  
*Sarkviridae*

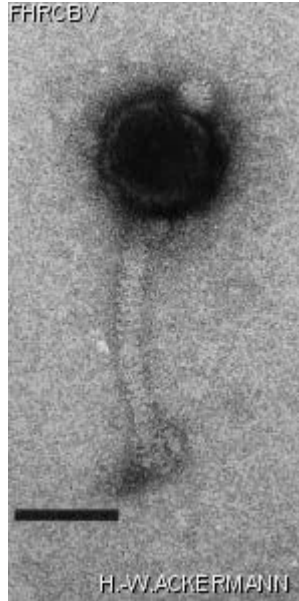
*Genus*  
*Jerseyvirus*

*Species*  
*Jerseyvirus jersey*

## Images

*Electron Micrograph*

*Image*



*Image description*

Magnification: 297,000X

Bar: 50 nm

Staining: UA

*Characteristics*

Plaques: 1mm, tiny yellow resistant colonies, halo of 1mm.

Do not propagate in Eagle-Earle medium or titrate on sea-blue agar.

Propagate on "Type 1" rather than "Jersey".

Abnormal tails.

Part of Felix and Callow's typing set for \*S. paratyphi\* B (Refs. 464 & 465).

*Genomic sequence*

Activated

## Propagation conditions

*Bacterial hosts*

1045

*Reference*

Felix, A., and B. R. Callow. 1943. Typing of paratyphoid B bacilli by means of VI bacteriophage. Brit. Med. J. pp. 127-130

*Remarks*

## History

*History*

**Received from**

Dr S. S. Kasatiya,  
Ministère des affaires sociales de la province de Québec,  
Direction des laboratoires,  
20045 Chemin Ste-Marie O.,  
Ste-Anne-de-Bellevue, P.Q., Canada

**Date**

2-20-1970

*Source*

*Updated at*  
2024-01-15