

HER number
39

Identification

<i>Name</i> 39	<i>Morphotype</i> B1 (Siphophage)	<i>Other designations</i>
-------------------	--------------------------------------	---------------------------

Taxonomy

<i>Realm</i>	<i>Kingdom</i>	<i>Phylum</i>	<i>Class</i>
<i>Order</i>	<i>Family</i> ?1	<i>Genus</i>	<i>Species</i> Vill

Images

Electron Micrograph

Image

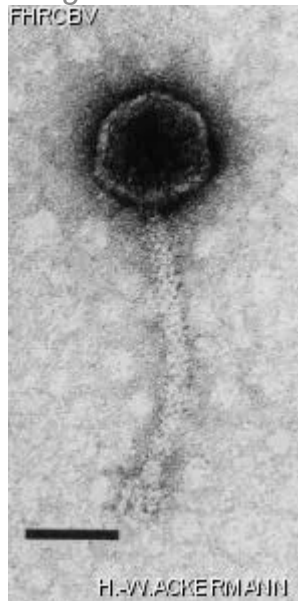


Image description

Magnification: 297,000X

Bar: 50 nm

Staining: UA

<i>Characteristics</i> Plaques: 0.5- 1mm, clear. Vi antigen specific. Typing phage of *S. typhi*; ancestral virus from which all adapted phages of the international typing set are derived.	<i>Genomic sequence</i> Deactivated
Propagation conditions	
<i>Bacterial hosts</i> 1038	
<i>Reference</i> Desranleau, J.-M. 1947. Typing of *Bact. typhosum* and *Bact. paratyphosum* B by means of a bacteriophage. Can. J. Public Health. 33:343-351.	
<i>Remarks</i>	
History	
<i>History</i>	
Isolated by J. A. Craigie and C. H. Yen	Date
Received from Dr med. V. Lenk, Institut für Hygiene und Medizinische Mikrobiologie der Freien Universität, Berlin, Föhrer Str. 14, 1000 Berlin 65, W. Germany.	Date 1959
<i>Source</i>	
<i>Updated at</i> 2024-01-15	